





## WARNING

READ BEFORE USING YOUR SEGA VIDEO GAME SYSTEM

### EPILEPSY WARNING

A very small percentage of individuals may experience epileptic seizures when exposed to certain light patterns or flashing lights. Exposure to certain patterns or backgrounds on a television screen or while playing video games may induce an epileptic seizure in these individuals. Certain conditions may induce undetected epileptic symptoms even in persons who have no history of prior seizures or epilepsy. If you, or anyone in your family, has an epileptic condition, consult your physician prior to playing. If you experience any of the following symptoms while playing a video game – dizziness, altered vision, eye or muscle twitches, loss of awareness, disorientation, any involuntary movement, or convulsions – IMMEDIATELY discontinue use and consult your physician before resuming play.

### Owners of Projection Televisions

Still pictures or images may cause permanent picture-tube damage or mark the phosphor of the CRT. Avoid repeated or extended use of video games on large-screen projection TVs.

### About Audio Connectors

If the Audio connection is made to your television from the Sega CD, the Mixing Cable must be used to connect the headphone output jack on the front of the Genesis to the MIXING input jack on the rear of the Sega CD. If the Audio connection is made to your television from the Sega Genesis (using either the RF cable or a Video Monitor cable), the Mixing Cable must NOT be used.

### Handling Your Sega CD

- The Sega CD Disc is intended for use exclusively with the Sega CD™ System.
- Do not bend it, crush it, or submerge it in liquids.
- Do not leave it in direct sunlight or near a radiator or other source of heat.
- Be sure to take an occasional recess during extended play, to rest yourself and the Sega CD Disc.
- KEEP YOUR SEGA CD DISC CLEAN. Always hold by the edges, and keep in its case when not in use. Clean with a lint-free, soft dry cloth—wiping in straight lines from center to edge. Never use solvents or abrasive cleaners.

WARNING TO OWNERS OF PROJECTION TELEVISIONS: STILL PICTURES OR IMAGES MAY CAUSE PERMANENT PICTURE-TUBE DAMAGE OR MARK THE PHOSPHOR OF THE CRT. AVOID REPEATED OR EXTENDED USE OF VIDEO GAMES ON LARGE-SCREEN PROJECTION TELEVISIONS.



**DATA EAST USA, INC.**  
1850 Little Orchard Street  
San Jose, CA 95125



This official seal is your assurance that this product meets the highest quality standards of SEGA™. Buy games and accessories with this seal to be sure that they are compatible with SEGA CD™ SYSTEM.

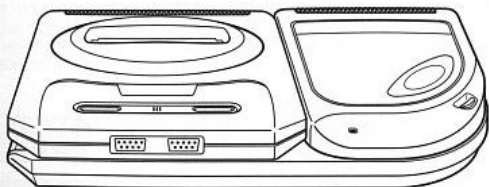
# TABLE OF CONTENTS

Starting Up Your System .....	4
Story .....	5
Control .....	6
Character .....	7
How to Play "Panic!" Correctly .....	8
Whispers of the Devil .....	9
Warranty .....	10
Panic's Notes! .....	11



# SETTING UP YOUR SYSTEM

- 1 Set up your Genesis and Sega CD Systems and plug in Control Pad 1.
- 2 Turn on your TV or monitor, and then turn on the Genesis.
- 3 Press Start or Button A,B or C when you see the Sega CD logo. The Sega CD Control Panel will appear.
- 4 Press Start or Button A,B or C to open the disc tray. Place the **Panic!** disc into the tray. Then press Button A,B, or C again to close the tray.
- 5 Press Start or use the D-Button to move the cursor to the CD-ROM button.
- 6 Press A,B or C to begin. The opening screens of the game will appear. (If the disc is already in the tray when you turn on the system, the game will begin automatically after a few moments.)
- 7 To stop a game in progress, or when the game ends, press the Reset Button on the Genesis console to return to the Sega CD Control Panel.



# STORY

- ① Machines have suddenly begun to malfunction worldwide.
- ② A nasty computer virus has created software bugs in the computer network server, which will infect every device on the planet.
- ③ If you leave it, you cannot play tv games.
- ④ The program, codenamed "Panic!," was designed to destroy the virus.
- ⑤ You control all machines by pressing switches in this game.
- ⑥ Attack the mother computer!
- ⑦ Your obligation is to press switches to return to normal the world.
- ⑧ Select switches and start!



# CONTROL

This game has the P mode only. Please connect the control pad with the control terminal 1 of mega drive. This is compatible with the Sega mouse.

## Joy Pad

To move the carsoul

To select a command or a game data file

## A, B and C Buttons

To press a switch

To set up a command or a game data file

To check out screens

To be compatible with the left button in the Sega mouse

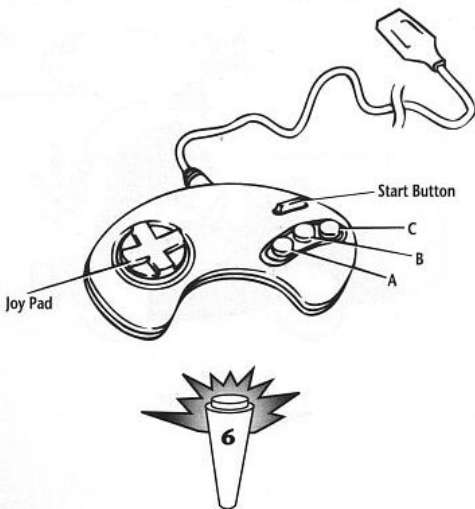
## The Start Button

To start the game

To go to the map screen

To be compatible with the right button in the Sega mouse

When you press the start button in the main screen, you can go to the map screen and collect information.



# CHARACTER

## (SLAP)

### THE BOY

#### Slap Cap

His favorite cap (he never removes it even in bed).

#### The Hand

Suitable for pressing switches and moving forward.

#### The Brain

Remembers forms and brands of all switches.

#### Eyes

Never miss any tiny switches.

#### The Heart

Heart grows larger than life even on a bad hair day.



## (STICK)

### THE DOG

#### Ears

His hearing ability is far above that of human beings.

#### The Paws

He can carry things with his hands and press switches.

#### Stick Legs

He can stand up with 2 legs.

#### The Brain

He believes he is a human being not a dog that can save the world.

#### The Smirk

Wise and nice smile.

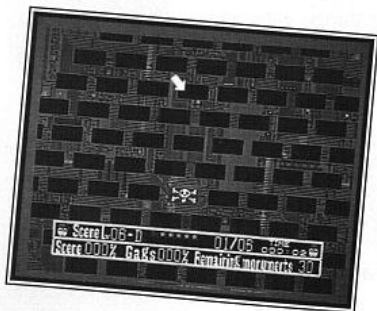
#### The Stomach

I can digest anything hard.



# HOW TO PLAY "PANIC!" CORRECTLY

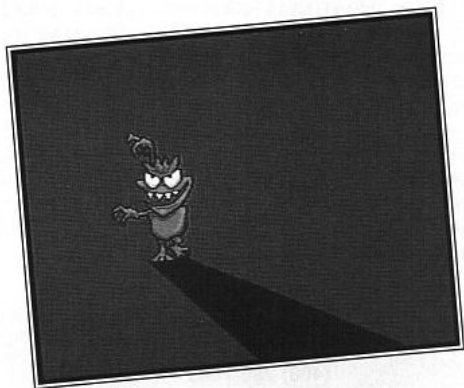
- 1 Sit back and relax. Enjoy the funny screens.
- 2 Laugh at the funny gags. What will happen next?
- 3 You can save the game if you get tired.
- 4 Keep your eyes on the game.
- 5 All up-left buttons (switches) have gags.





# WHISPERS OF THE DEVIL

- 1 More suspense per square inch than aliens on two cups of java.
- 2 I juggle humor with destruction. I change famous faces in weird places. Just watch.
- 3 Who says aggression needs to be high-tech?
- 4 I can make you very nervous. That's my job.
- 5 So, you're chasing your tail?
- 6 How many times will I see you? "Take a nap."
- 7 Someone is shadowing your every move.



# WARRANTY

## 90 Day Limited Warranty

Data East USA, Inc. warrants to the original purchaser of this Data East software product that the medium on which this computer program is recorded is free from defects in materials and workmanship for a period of ninety (90) days from the date of purchase. This Data East software program is sold "as is" without express or implied warranty of any kind, and Data East is not liable for any losses or damages of any kind resulting from the use of this program. Data East agrees for a period of ninety (90) days to either repair or replace, at its options, free of charge, any Data East software product, postage paid, with proof of date of purchase, at its Factory Service Center.

This warranty is not applicable to normal wear and tear. This warranty shall not be applicable and shall be void if the defect in the Data East software product has arisen through abuse, unreasonable use, mistreatment or neglect.

THIS WARRANTY IS IN LIEU OF ALL OTHER WARRANTIES AND NO OTHER REPRESENTATIONS OR CLAIMS OF ANY NATURE SHALL BE BINDING ON OR OBLIGATE DATA EAST. ANY IMPLIED WARRANTIES APPLICABLE TO THIS SOFTWARE PRODUCT, INCLUDING WARRANTIES OF MERCHANTABILITY AND FITNESS FOR A PARTICULAR PURPOSE ARE LIMITED TO THE NINETY (90) DAY PERIOD DESCRIBED ABOVE. IN NO EVENT WILL DATA EAST BE LIABLE FOR ANY SPECIAL, INCIDENTAL, OR CONSEQUENTIAL DAMAGES RESULTING FROM POSSESSION, USE OR MALFUNCTION OF THE DATA EAST SOFTWARE PRODUCT.

Some states do not allow limitations as to how long an implied warranty lasts and/or exclusions or limited or incidental or consequential damages so the above limitations and/or exclusions of liability may not apply to you. This warranty gives you specific rights, and you may also have other rights which may vary from state to state.

Data East USA, Inc.  
1850 Little Orchard Street  
San Jose, California 95125  
(408) 286-7080



# GRAND PRIZE



## FIRST PRIZE

32X - New Sega System on the market!  
(Not yet available)

## SECOND PRIZE

Your choice of 2 Data East titles available

## THIRD PRIZE

Sports Bottle

---

### OFFICIAL CONTEST RULES

### NO PURCHASE NECESSARY TO ENTER OR CLAIM A PRIZE

Not sponsored by Sega.

#### HOW TO ENTER:

By using your \$10.00 coupon or by sending in the above entry form you will automatically become eligible to win, or

fill out a plain 3 1/2" X 5" card with your name, address and telephone number (please print) and mail it to DATA EAST USA, INC., 1850 Little Orchard Street, San Jose, CA 95125. Not responsible for printing errors, or for mutilated, late, lost, postage due or misdirected mail. Only one entry per person. Entries must be received and postmarked no later than March 31, 1995.

#### HOW TO WIN:

On or about April 14, 1995, winners will be randomly drawn from all eligible entries. All prizes will be awarded. Odds of winning depend upon the number of entries received. Only one prize per person, family, organization or household.

Patents: U.S.'s 4,442,486/4,454,594/4,462,076/4,026,555; Europe # 80244; Canada #'s 1,183,276/1,082,351; Hong Kong # 88-4302; Germany # 2,609,826; Singapore # 88-155; U.K. # 1,535,999; France # 1,607,029; Japan #'s 1,632,396/82-205605 (pending).

**TO ORDER:**

Fill out front side of this coupon and send to:  
"Data East Coupon Offer"  
1850 Little Orchard Street  
San Jose, California 95125

Or telephone "Data East Coupon Offer"  
(408) 286-7080

This coupon is redeemable against Data East product through Data East USA, Inc., while supplies last.  
Offer expires January 1, 1996.

Name \_\_\_\_\_

Address \_\_\_\_\_

Phone# \_\_\_\_\_

Store where product was purchased from: \_\_\_\_\_

**NOTIFICATION:**

GRAND PRIZE WINNER WILL BE ANNOUNCED IN EGM AND SEGA VISIONS!

All winners will be notified by mail by April 30, 1995. By accepting their prizes, winners consent to the use of their names, photographs, or other likenesses for the purpose of advertisements or promotions on behalf of Data East without other compensation.

**PRIZES:**



(1) Grand prize: WORLD WRESTLING FEDERATION WWF ROYAL RUMBLE® ARCADE STYLE PINBALL GAME.

Estimated value of the Grand Prize is \$4,500.00.

(2) First prizes: Sega 32X System.

(6) Second prizes: Your choice of 2 Data East titles available.

(200) Third prizes: Sports Water Bottle.

**GENERAL CONDITIONS:**

Winners accepting prizes agree that all prizes are awarded on the condition that DATA EAST and their agents, representatives and employees will have no liability whatsoever for any injuries, losses, or damages of any kind resulting from acceptance, possession or use of the prizes. Winners further acknowledge that said parties have neither made nor are in any manner responsible or liable for any warranty, representation, or guarantee expressed or implied, in fact or in law, relative to any prize, including but not limited to, its quality, mechanical condition or fitness.


All taxes are the sole responsibility of the winners. Prizes are not transferable.

**ELIGIBILITY:**

Sweepstakes open to all persons who are residents of the United States. Employees and their immediate family members of DATA EAST, its divisions, subsidiaries, affiliates, advertising and promotion agencies and any other persons or agencies involved with this promotion are not eligible. Void in Puerto Rico and where prohibited by law and subject to applicable federal, state and local taxes and regulations.

**WINNERS LIST:**

For the name of the winners, available April 30, 1995, send a request envelope to "PINBALL SWEEPSTAKES" C/O DATA EAST USA, INC., 1850 Little Orchard Street, San Jose, CA 95125.

Sega, Sega 32X are registered trademarks of Sega Enterprises.  WWF Royal Rumble® are registered trademarks of Titan Sports Inc.

# DATA EAST USA INC.

## \$10 off

ON ALL DATA EAST PRODUCTS

- Fighter's History SNES .....\$69.95
- Outrunners Sega Genesis ..\$69.95
- Joe & Mac II SNES .....\$54.95
- Side Pocket SNES .....\$54.95
- Side Pocket Sega Game Gear .....\$39.95
- PANIC! Sega CD .....\$49.95
- Side Pocket "Special Edition" Sega CD ..\$49.95
- Future Titles

Name \_\_\_\_\_

Address \_\_\_\_\_

City \_\_\_\_\_

State \_\_\_\_\_

Zip code \_\_\_\_\_

Phone # \_\_\_\_\_

Visa or  Master Card # \_\_\_\_\_

Exp. \_\_\_\_\_

Signature \_\_\_\_\_

Money Order

To order send to:

"Data East Coupon Offer"  
1850 Little Orchard Street  
San Jose, CA 95125

Offer expires January 1, 1996.

Sub-Total

Tax/Handling

Coupon

Total

Inc.
-10.00

# TEN DOLLARS

LICENSED BY SEGA ENTERPRISES, LTD.  
FOR PLAY ON THE SEGA CD™ SYSTEM.

SEGA AND SEGA CD ARE TRADEMARKS  
OF SEGA ENTERPRISES, LTD.  
ALL RIGHTS RESERVED.



DATA EAST USA, INC.  
1850 LITTLE ORCHARD STREET  
SAN JOSE, CA 95125

MANUFACTURED IN THE U.S.A.